



Fig.: Order no. 34116

## Double-sided stepladder GFRP / alu

80 mm  
stepsTested to  
1,000 volts

- Double-sided stepladder made of glass-fibre reinforced plastic/aluminium
- Side-rails made of glass-fibre reinforced plastic profiles (min. 10 years ageing resistance)
- Grooved steps with a depth of 80 mm, made of aluminium
- 4-fold edged step-to-side-rail connection
- Conical side-rail guide for secure footing
- nivello® ladder shoes
- ergo-pad® grip area with clamping mechanism
- Solid, galvanised steel hinges with screw attachment
- Plastic end caps on upper side-rail end
- Spreader lock with two high-strength nylon straps
- Step spacing: 235 mm
- Ladder inclination: 70°
- Maximum load: 150 kg
- Suitable for working near or on live parts
- Tested up to 1000 V as per DIN EN 61478:2002 Clause 6.5.1 and A1:2004 Category 1

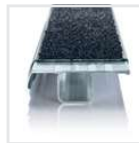
**Note:** Products with glass-fibre reinforced plastic content are non-returnable due to their sensitivity

Approx. max. working height in m	2.5	3.0	3.5	4.0	4.5
Number of steps	2 x 4	2 x 6	2 x 8	2 x 10	2 x 12
Ladder length in m	1.10	1.60	2.10	2.60	3.10
Lower outer width in m	0.49	0.55	0.60	0.66	0.73
Base spread in m	0.92	1.23	1.68	1.91	2.26
Depth of side-rails in mm	73	73	73	73	73
Weight in kg	8.0	11.5	14.5	19.0	22.8
Order no.	34108	34112	34116	34120	34124

### Safety. Made in Germany.

nivello®  
ladder shoesergo-pad®  
grip area4-fold edged  
step-to-side-rail  
connectionDetails on the relevant product page at [www.steigtechnik.de](http://www.steigtechnik.de)

### Suitable accessories

clip-step R 13  
step paddingFind out more from  
page 110 onwards

## Double-sided rung ladder



Rungs

Appropriate accessories are  
required for TRBS-compliant  
work

- Double-sided rung ladder made of aluminium
- Including tool tray
- Stable rectangular tube side-rails
- Grooved square rungs, 30 x 30 mm
- 4-fold edged rung-to-side-rail connection
- Conical side-rail guide for secure footing
- nivello® ladder shoes with patented 2-axis inclination technology
- Solid, galvanised steel hinges with screw attachment
- Plastic end caps on upper side-rail end
- Spreader lock with two high-strength nylon straps
- Transport securing strap
- Rung spacing: 280 mm
- Maximum load: 150 kg



Fig.: Order no. 33012 and order no. 19910

Approx. max. working height in m	3.3	3.8	4.35	4.85	5.4	5.95
Number of rungs	2 x 6	2 x 8	2 x 10	2 x 12	2 x 14	2 x 16
Ladder length in m	1.83	2.40	2.95	3.51	4.07	4.63
Lower outer width in m	0.53	0.59	0.65	0.70	0.76	0.82
Base spread in m	1.07	1.36	1.65	1.94	2.23	3.01
Depth of side-rails in mm	58	58	58	58	73	73
Weight in kg	7.5	10.5	12.5	16.0	18.0	21.0
Order no.	33012	33016	33020	33024	33028	33029

### Safety. Made in Germany.

nivello®  
ladder shoesSpreader lock with  
two high-strength  
nylon straps4-fold edged rung-to-  
side-rail connectionDetails on the relevant product page at [www.steigtechnik.de](http://www.steigtechnik.de)

### Suitable accessories

R 13 hook-in step  
Order no. 19910Bucket hook  
Order no. 19115

Find out more from page 110 onwards